

45/82

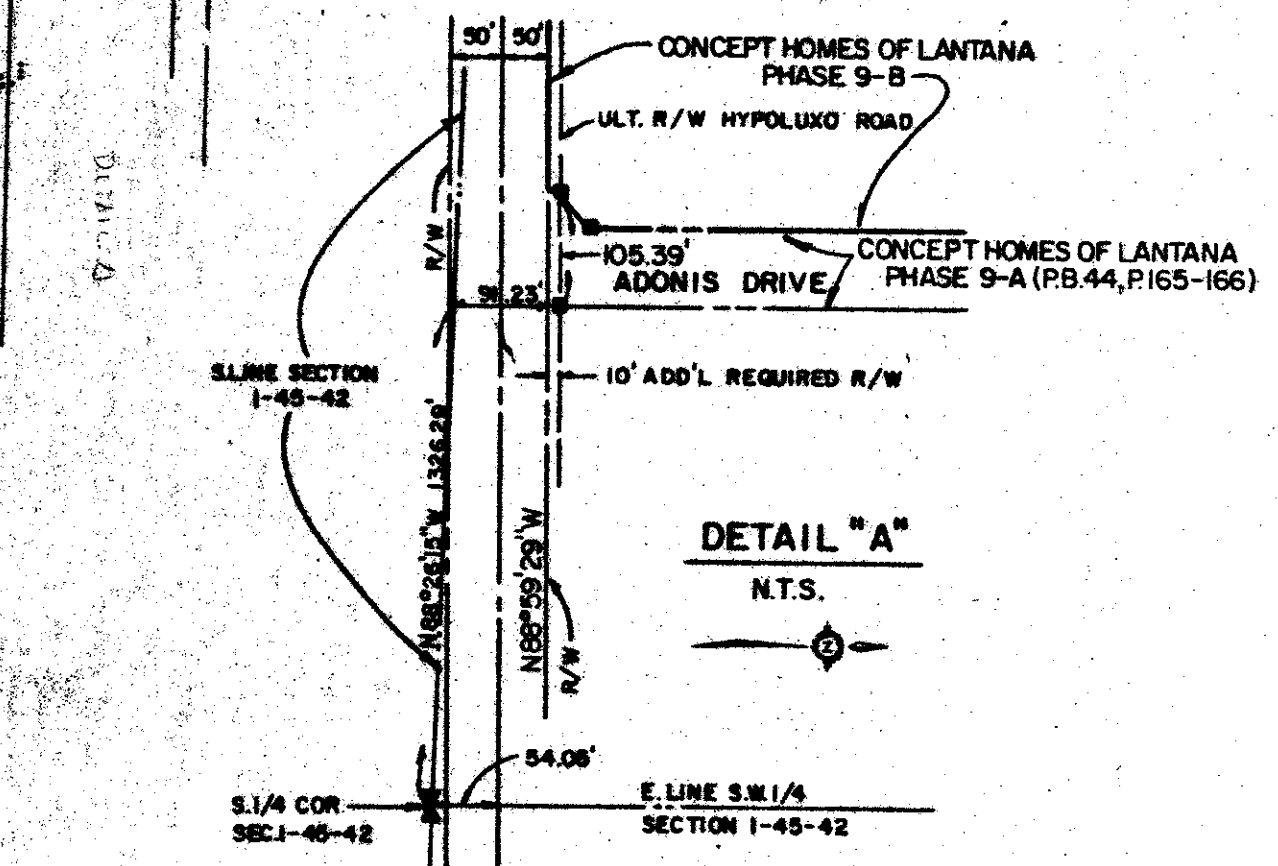
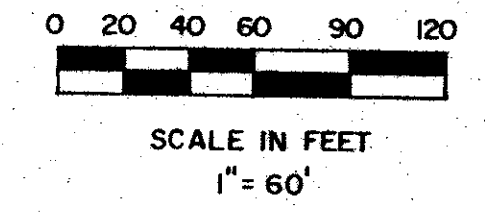
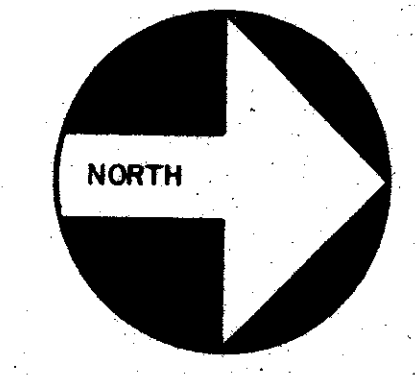
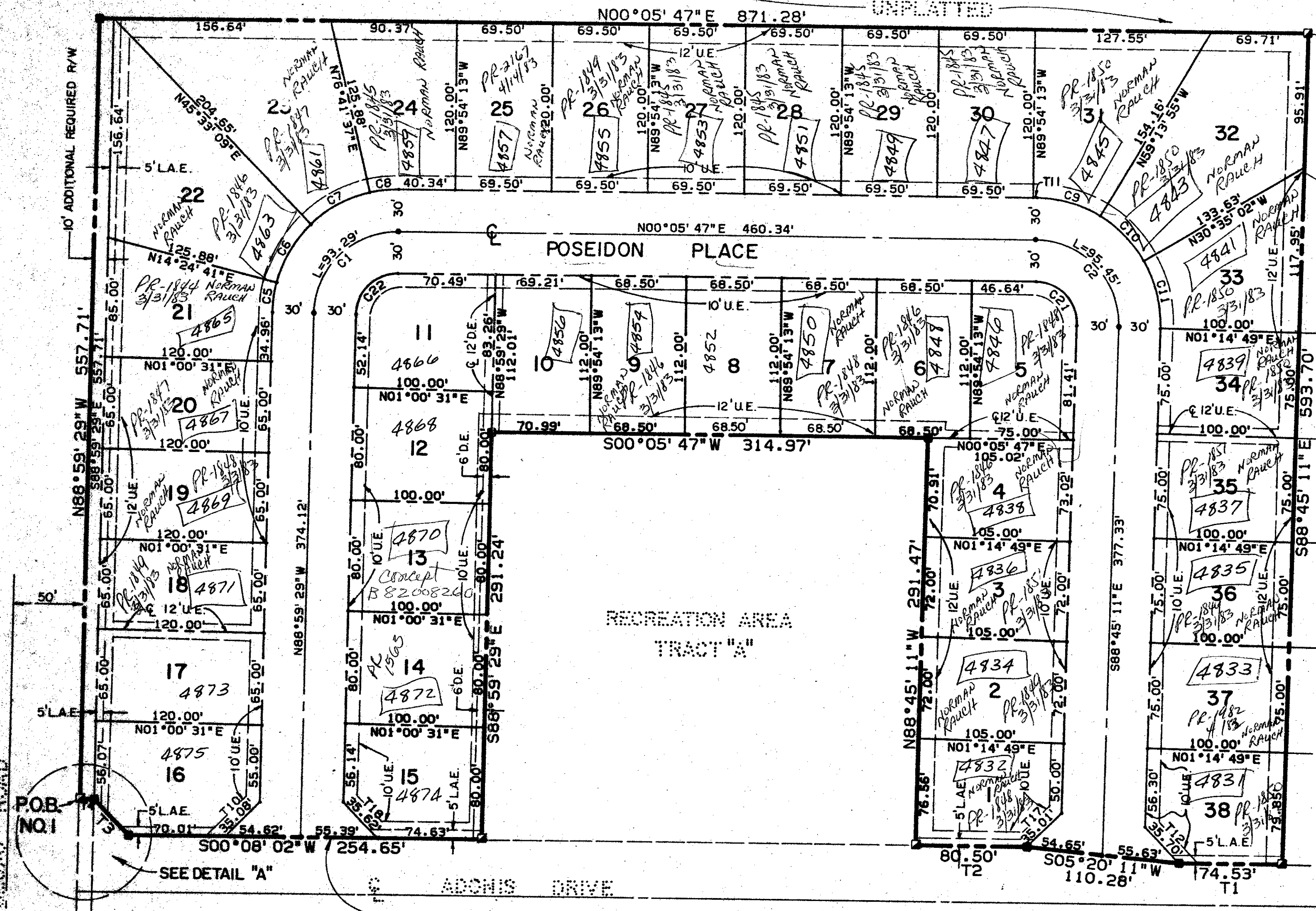
CONCEPT HOMES OF LANTANA PHASE 9-B

BEING A PARCEL OF LAND LYING IN THE SOUTHWEST ONE-QUARTER OF SECTION 1, TOWNSHIP 45 SOUTH, RANGE 42 EAST, PALM BEACH COUNTY, FLORIDA.

JANUARY, 1983

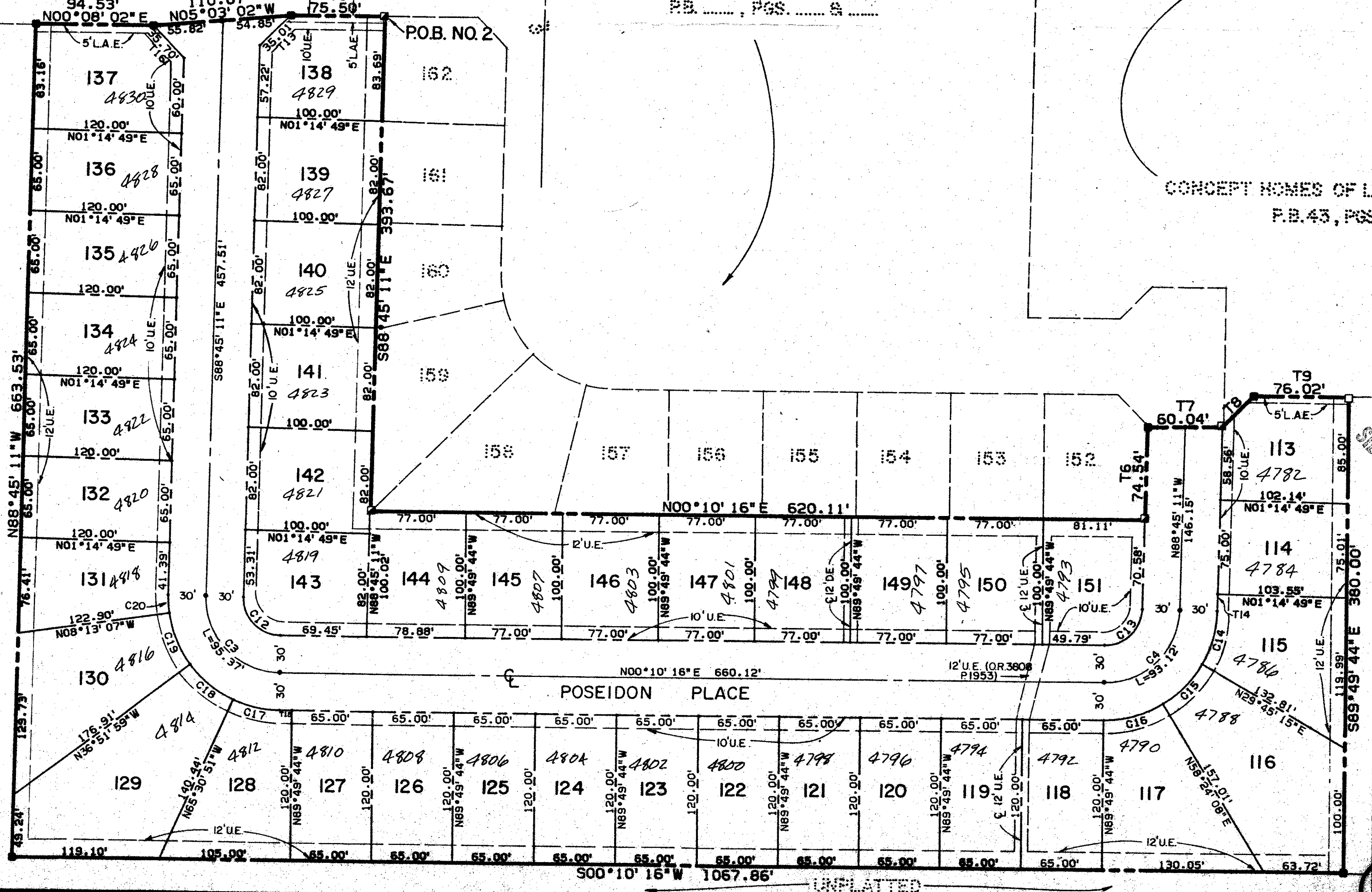
SHEET 2 OF 2

STATE OF FLORIDA
COUNTY OF PALM BEACH
THIS PLAT WAS FILED FOR
RECORD AT
THIS DAY OF
AUGUST, 1983 AND DULY RECORDED
IN PLAT BOOK _____ ON PAGES
AND _____
JOHN B. DUNKLE, CLERK
CIRCUIT COURT
BY: _____ DC.



NO	DELTA	RADIUS	LENGTH
C1	89°05'16"	60.00	93.29
C2	91°08'02"	60.00	95.48
C3	91°04'34"	60.00	95.37
C4	88°55'26"	60.00	93.12
C5	13°24'10"	90.00	21.05
C6	31°08'28"	90.00	48.92
C7	31°08'28"	90.00	48.92
C8	13°24'10"	90.00	21.05
C9	30°40'18"	90.00	48.18
C10	28°38'52"	90.00	45.00
C11	31°49'32"	90.00	50.00
C12	91°04'34"	90.00	47.69
C13	88°55'26"	90.00	46.58
C14	28°30'26"	90.00	44.78
C15	28°38'52"	90.00	45.00
C16	31°46'08"	90.00	49.90
C17	24°18'53"	90.00	38.13
C18	28°38'52"	90.00	45.00
C19	28°38'52"	90.00	45.00
C20	9°27'56"	90.00	14.87
C21	91°08'02"	30.00	47.73
C22	89°05'16"	30.00	46.65

NO	BEARING	DISTANCE
T1	S00°08'02"W	74.53
T2	S00°08'02"W	80.50
T3	S45°34'16"W	35.62
T4	S00°08'02"W	10.00
T5	N00°08'02"E	75.50
T6	N88°45'11"W	74.54
T7	N00°43'30"W	60.04
T8	N44°17'28"W	35.02
T9	N00°10'16"E	76.02
T10	N44°25'44"W	35.08
T11	N00°05'47"E	3.00
T12	N45°41'25"E	35.70
T13	S44°18'35"E	35.01
T14	S88°49'11"E	13.62
T15	S00°10'16"E	10.12
T16	S45°41'25"W	35.70
T17	N44°18'35"W	35.01
T18	N45°34'16"E	35.62



SIDEWALK REQUIRED

TURNOUT REQUIRED

1-45-42

45/82

Meridian
Surveying and mapping inc.
2228 So. Congress Ave.
Suite 2-0
West Palm Beach, Florida 33408
CONCEPT HOMES OF LANTANA
PHASE 9-B
AUG. 1982
79-P-153

0223-305

310